



Living Area  
 Cozy and informal  
 Gas fireplace  
 TV  
 DVD & VCR player  
 Ceiling fan  
 Fax machine available upon request

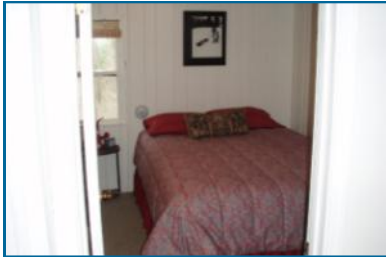


Dining Area

Comfortable seating for six  
 Portable radio/CD player



Kitchen  
 Microwave  
 Dishwasher  
 Toaster & Coffee maker  
 All cutlery, dishes, pans, towels, and basic pantry items (e.g., salt/pepper, food storage, coffee filters, etc) provided



Front Bedroom

Full size bed  
 Two sets of bed linens and bath towels provided

(Adjacent bathroom not shown—includes shower and full size washer/dryer)



Back Bedroom

Queen size bed  
 Ceiling Fan  
 TV /VCR  
 Two sets of bed linens and bath towels provided  
 Private sliding glass door access to back deck



Secluded Back Deck

Perfect for outdoor dining or entertainment  
 Outdoor patio set with seating for four  
 Gas grill

Maximum Occupancy

Maximum occupancy of the cottage is 4 people.

Pets

Although pets are not specifically prohibited, additional rates/deposits/terms are necessary. Veterinary certification of "flea-free" is required. Please contact us for more information.

Smoking

In consideration of our other guests, no smoking is allowed within the cottage.

Arrival/Departure Times

Unless otherwise specified, check-in is Saturday at 2 p.m., and check-out is Saturday at 9 a.m.

Payments

Unless otherwise agreed, an initial payment of 50% of the full rental is due within one week to secure the reservation. The remaining balance is due upon arrival.

Security Deposit

A fully refundable security deposit is required upon arrival. The deposit amount varies depending upon total number of occupants, length of stay, pets, etc but will be approximately 25 to 50% of the rental total.

Cancellation

If cancellation of your reservation is required, we will gladly refund your initial payment if the vacancy is refilled. Otherwise, the initial payment will not be refunded. If, during your rental stay an early departure is necessary, full payment of the rental term is required.

Winter & Yearly Leases

Specific winter and yearly lease terms and quotes are available upon request.

3/1/09

**Lance & Lisa Burton**

P. O. Box 580  
 23 State Street  
 Castine, Maine 04421

Office (207) 326-4246  
 Cellular (207) 669-5029

www.mainelyrentals.com  
 info@mainelyrentals.com

~ Quiet, stress-free residential vacation escapes ~



~ Coastal Castine's Cottage Charm ~

17 State Street  
 Castine, Maine  
 04421

Call or email us to inquire about availability  
 (207) 326-4246

info@mainelyrentals.com  
 www.mainelyrentals.com



Welcome to our New England style cottage located "On-Neck" at 17 State Street in historic Castine, Maine. This fully furnished, charming, 2 bedroom, 1 bath cottage provides all the comforts of home with the added convenience of being located within walking distance to Maine Maritime Academy, the Castine Golf Course, Yacht Club, local businesses, waterfront and historic forts.

May \$595 per week- \$85 per night  
June \$770 per week - \$110 per night  
July & August \$910 per week - \$130 per night  
Weekly rentals only (Saturday to Saturday) unless otherwise agreed. Minimum one week rental.

Amenities include:

Gas Grill

Gas Fireplace

Full Size Washer and Dryer

Dishwasher

Basic Kitchen Appliances & Utensils

Basic Pantry Supplies (salt/pepper, food storage, bags, etc)

Bed and Bath Linens

Cable TV

Free Local & Long Distance Telephone Service  
(within continental U.S.)

Wireless Broadband Internet Access

Pets Permitted (additional terms apply)

Air Conditioning (additional terms may apply)

Make your vacation complete with a lobster dinner enjoyed outdoors on your private deck! Fresh, live lobster normally available locally.

*"We hope you feel at home in our cottage and enjoy your stay" - Lance & Lisa Burton*



Travel Information

Airline - The nearest major airport is Bangor International (BGR). Transportation assistance from/to the airport can be arranged. Please ask for details.

Auto travel from the south - Many consider this "interior" route not as scenic as the "coastal" route. However, the summer traffic congestions plaguing Coastal Rt. 1 in Wiscasset, Rockland and Camden are avoided.

1. I-95N to Augusta.
2. Exit 113 onto ME-3 toward Belfast, follow for approximately 45 miles.
3. Merge onto US-1 N/ME-3N via left turn onto ramp.
4. Follow for approximately 20 miles US-1 N, passing thru Searsport and Bucksport and continue as if heading for Ellsworth/Bar Harbor (Acadia Hwy).
5. Approximately 2 miles after passing thru Bucksport, turn right on ME-175/Castine Road.
6. Follow Castine Road approx. 15 miles (Rt. 175 becomes Rt. 166; continue on Rt. 166).
7. Upon passing the Wadsworth Cove Road and "British Canal", climb "Windmill Hill" into On Neck Castine.
8. At top of hill, stay straight to continue onto State Street in lieu of taking the sharp right turn.
9. 17 State Street is fourth house on your left and just prior to Eaton's Lane.